



State of New Jersey
 THE PINELANDS COMMISSION
 PO Box 359
 NEW LISBON, NJ 08064
 (609) 894-7300
 www.nj.gov/pinelands



Chris Christie
 Governor

Kim Guadagno
 Lt. Governor

General Information: Info@njpines.state.nj.us
 Application Specific Information: AppInfo@njpines.state.nj.us

Sean W. Earlen
 Chairman

Nancy Wittenberg
 Executive Director

New 2018 Pinelands National Reserve Wall Calendars Now Available at Three Parks and Forests in the Pinelands

(12/8/2017)

Copies of the second-ever Pinelands National Reserve wall calendar are now available free of charge at three parks and forests in the Pinelands.

The calendar was funded by the New Jersey Pinelands Commission, and it features 38 stunning photos that showcase the natural, cultural and historic treasures found in the 1.1-million-acre Pinelands National Reserve of southern New Jersey.

The Pinelands Commission worked with Rowan College at Burlington County to produce the calendar. All of the photos were taken by members of the Commission's staff.

Aside from the photos of the region's resources, the calendar includes State and Federal holidays, dates of Pinelands Commission meetings and important dates in Pinelands history.



Above: The cover of the 2018 Pinelands National Reserve wall calendar.

Copies of the calendar can be obtained at the following park and forest offices, while supplies last:

Bass River State Forest
 762 Stage Road
 Bass River Township, NJ
 (609) 296-1114

(MORE)

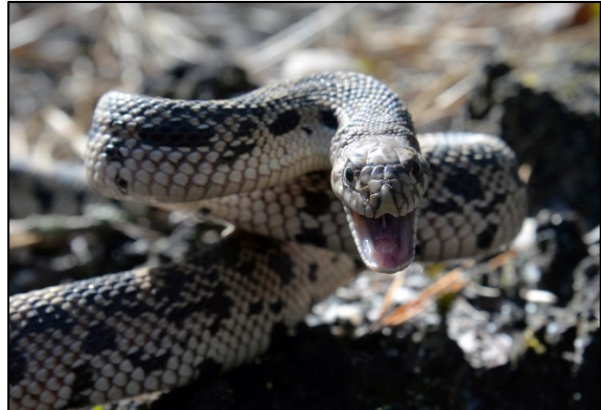
Batsto Visitor Center

GPS address:
4110 Nesco Road
Hammonton, NJ
(609) 561-0024

Brendan Byrne State Forest

Mile Marker 1
Highway Route 72 East
Woodland Township, NJ
(609) 726-1191

***** ATTENTION REPORTERS/EDITORS:** High-resolution images of the new calendar can be obtained via e-mail by contacting Paul Leakan, the Pinelands Commission's Communications Officer, at (609) 894-7300. Please see the sampling of calendar images below.



####